



YubiKey NEO Manager Quick Start Guide

For the YubiKey NEO, YubiKey NEO-n,
YubiKey 4, and YubiKey 4 Nano



Copyright

© 2016 Yubico Inc. All rights reserved.

Trademarks

Yubico and YubiKey are registered trademarks of Yubico Inc. All other trademarks are the property of their respective owners.

Disclaimer

The contents of this document are subject to revision without notice due to continued progress in methodology, design, and manufacturing. Yubico shall have no liability for any error or damages of any kind resulting from the use of this document.

The Yubico Software referenced in this document is licensed to you under the terms and conditions accompanying the software or as otherwise agreed between you or the company that you are representing.

Contact Information

Yubico Inc

420 Florence Street, Suite 200

Palo Alto, CA 94301

USA

yubi.co/contact

Document Release Date

July 8, 2016



Contents

Introduction	4
Getting Additional Help	4
Getting Started with YubiKey NEO Manager	5
System Requirements for YubiKey NEO Manager	5
Operating System.....	5
YubiKey Devices	5
Installing YubiKey NEO Manager	5
Using YubiKey NEO Manager	6

Introduction

The YubiKey NEO Manager is a tool that was designed so you can switch modes on the YubiKey NEO and NEO-n devices, and now works with the YubiKey 4 and YubiKey 4 Nano. This document guides you through the process of installing and getting started with the YubiKey NEO Manager application.

The YubiKey 4, YubiKey 4 Nano, YubiKey NEO, and YubiKey NEO-n have three connection modes over USB:

- OTP (the two configuration slots)
- U2F
- CCID (smart card functionality used with Yubico Authenticator, PIV, OpenPGP)

You can use the YubiKey NEO Manager to disable or enable any combination of connection modes at any time.

NOTE: All YubiKey 4, YubiKey 4 Nano, YubiKey NEO, and YubiKey NEO-n devices now ship with all modes enabled (effective November 2015). If you have recently purchased one of these YubiKeys, you will not need to change the connection mode.

Getting Additional Help

For more information, and to get help with your YubiKeys, see:

- [Support home page](#)
- [Documentation and FAQs](#)
- [Start a Support ticket](#)

Getting Started with YubiKey NEO Manager

This chapter describes what YubiKeys work with YubiKey NEO Manager, and then shows you how to install and use the YubiKey NEO Manager application.

System Requirements for YubiKey NEO Manager

This section defines the operating systems required for YubiKey NEO Manager and what YubiKeys that you can use with the YubiKey NEO Manager.

Operating System

You must have Microsoft Windows, Mac OS X, or Linux installed on your computer to install and use YubiKey NEO Manager.

YubiKey Devices

The YubiKey devices that work with the YubiKey NEO Manager application are:

- YubiKey 4
- YubiKey 4 Nano
- YubiKey NEO
- YubiKey NEO-n

NOTE: For the YubiKey Standard, YubiKey Nano, and FIDO U2F Security Key, a message is displayed in the center of the YubiKey NEO Manager application stating `The YubiKey NEO Manager does not support this device.`

Installing YubiKey NEO Manager

Be sure to download the latest version of YubiKey NEO Manager. YubiKey NEO Manager is available for Microsoft Windows, Mac OS X, and Linux.

To install YubiKey NEO Manager

1. Download the latest version of YubiKey NEO Manager from the Yubico website (<https://www.yubico.com/support/downloads/>) for the operating system you are using.
2. To install the application, do one of the following:
 - For Windows:
 - a. To launch the installation wizard, double-click the `yubikey-neo-manager-x.x.x-win.exe` file, where `x.x.x` is the version for the file you downloaded.

- b. Complete the installation wizard.
 - For Mac OS X:
 - a. To launch the installation wizard, double-click the `yubikey-neo-manager-x.x.x-mac.pkg` file.
where `x.x.x` is the version for the file you downloaded.
 - b. Complete the installation wizard.
 - For Linux:
 - a. Build the YubiKey NEO Manager application on a Linux distro.
TIP: For information on how to build the project and create the YubiKey NEO Manager executable on your Linux platform, see the [Yubico Developers website](#).
 - b. Launch and complete the installation process for your Linux distro.

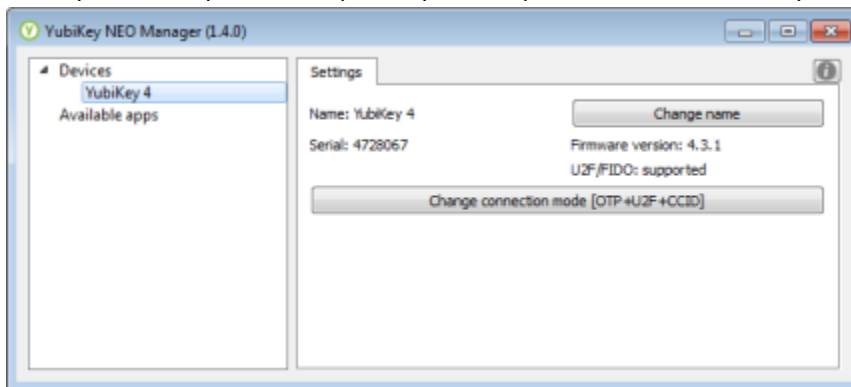
Using YubiKey NEO Manager

This section shows you how to change the name and connection mode for your YubiKey device, save your changes, and test the new settings.

TIP: If a YubiKey device is not inserted into your computer, the YubiKey NEO Manager application prompts you to insert your YubiKey device to continue. To change settings with YubiKey NEO Manager, only one YubiKey device can be plugged into your computer.

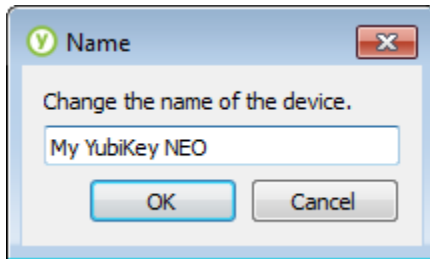
To get started using YubiKey NEO Manager

1. Insert your YubiKey into a USB port of your computer, and launch YubiKey NEO Manager.

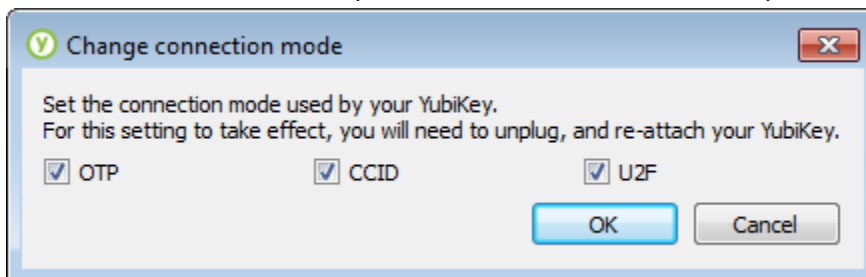


2. To set a unique name for your YubiKey device, click **Change name**.
NOTE: If you have YubiKey NEO Manager installed on multiple computers, the name change is reflected only

on the computer on which you made the change.



3. To enable any combination of U2F, OTP, and CCID modes, click **Change connection mode**.
 - **OTP** mode refers to the YubiKey functions that the YubiKey NEO shares with the basic YubiKey, including two configuration slots that you can program with any two of the following: Yubico OTP (programmed by Yubico in Configuration Slot 1, by default), OATH-HOTP, Challenge-Response, and Static Password.
 - **CCID** mode refers to the smart card elements on the YubiKey, and includes the applets such as OpenPGP, PIV, and YubiOATH (used to store OATH-TOTP and OATH-HOTP credential that can be accessed through Yubico Authenticator).
 - **U2F** mode refers to the Universal 2nd Factor (U2F) functionality (such as, Security Key) of your YubiKey device.
4. To enable the mode functionality, click the checkboxes for the modes you want.



TIP: In the example shown here, all three modes -- **OTP**, **CCID**, and **U2F** -- are already selected and therefore already enabled.

5. Once you select the modes you want, click **OK** to confirm the selections.
6. YubiKey NEO Manager prompts you to remove your YubiKey from the USB slot, then plug it back in. This enables the YubiKey to initialize all the selected modes.

To test your changed settings

- To test that your YubiKey device now functions in the selected modes, see these demo websites:
 - OTP: <http://demo.yubico.com>
 - U2F: <http://demo.yubico.com/u2f>